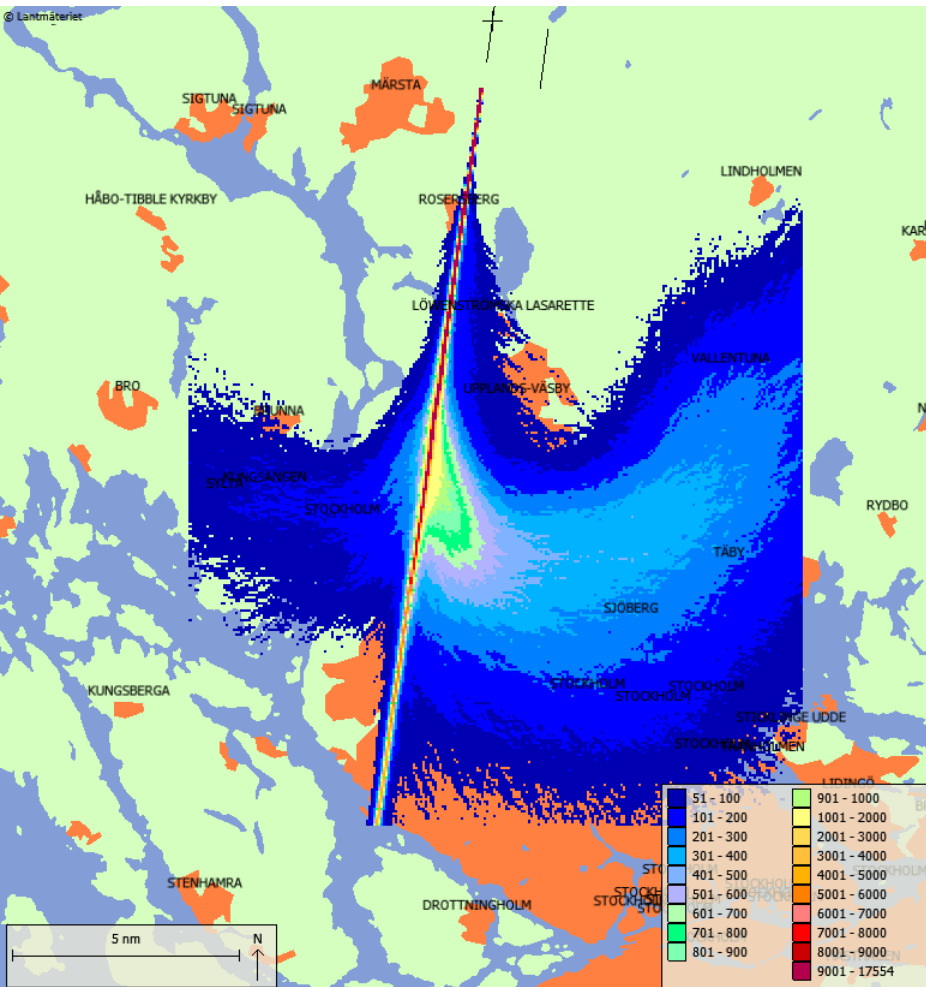


Flygvägar och flyghöjder före och efter Bana 3

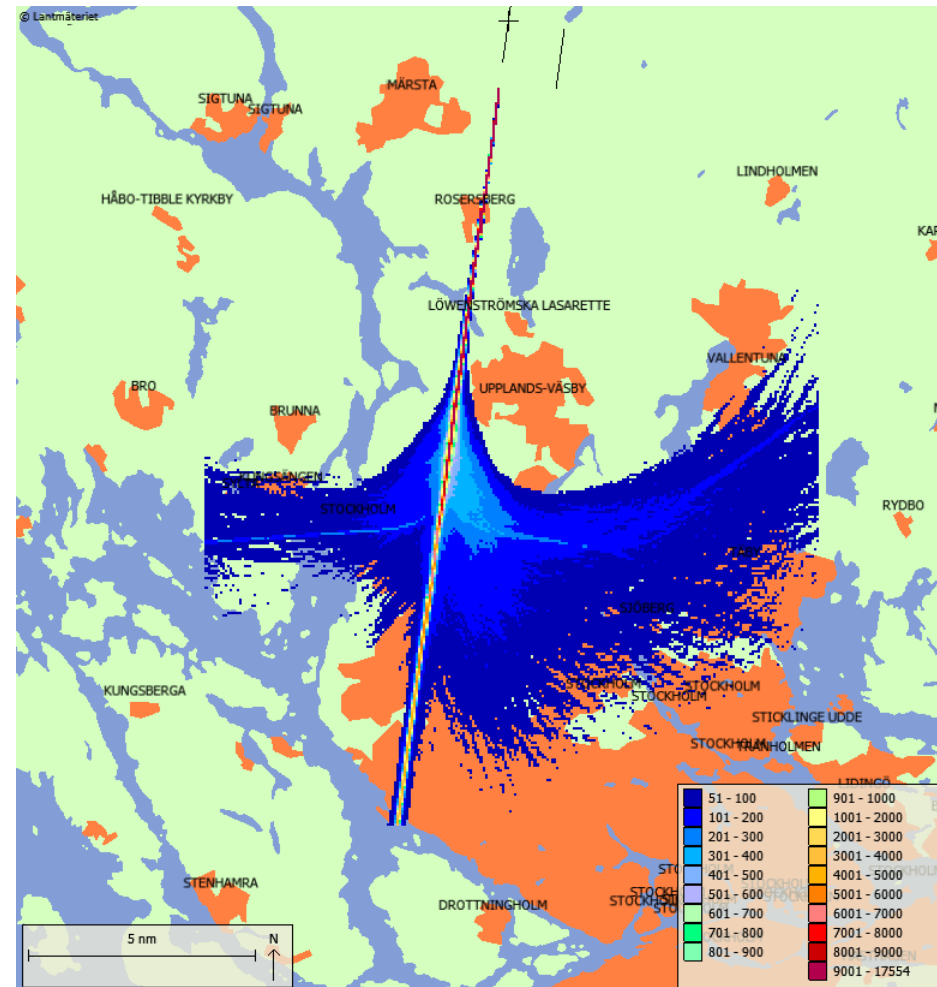
- Martin Wall / Swedavia Konsult

2001



39 405 landningar

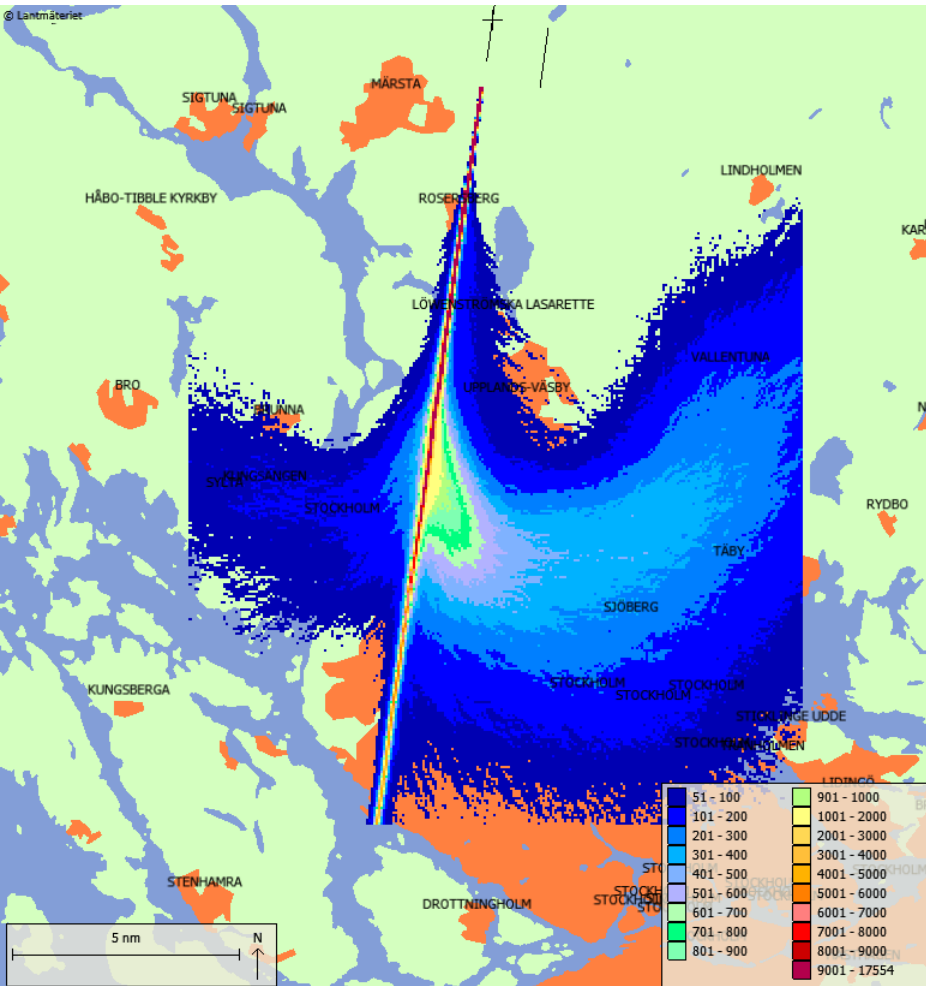
2011



17 563 landningar

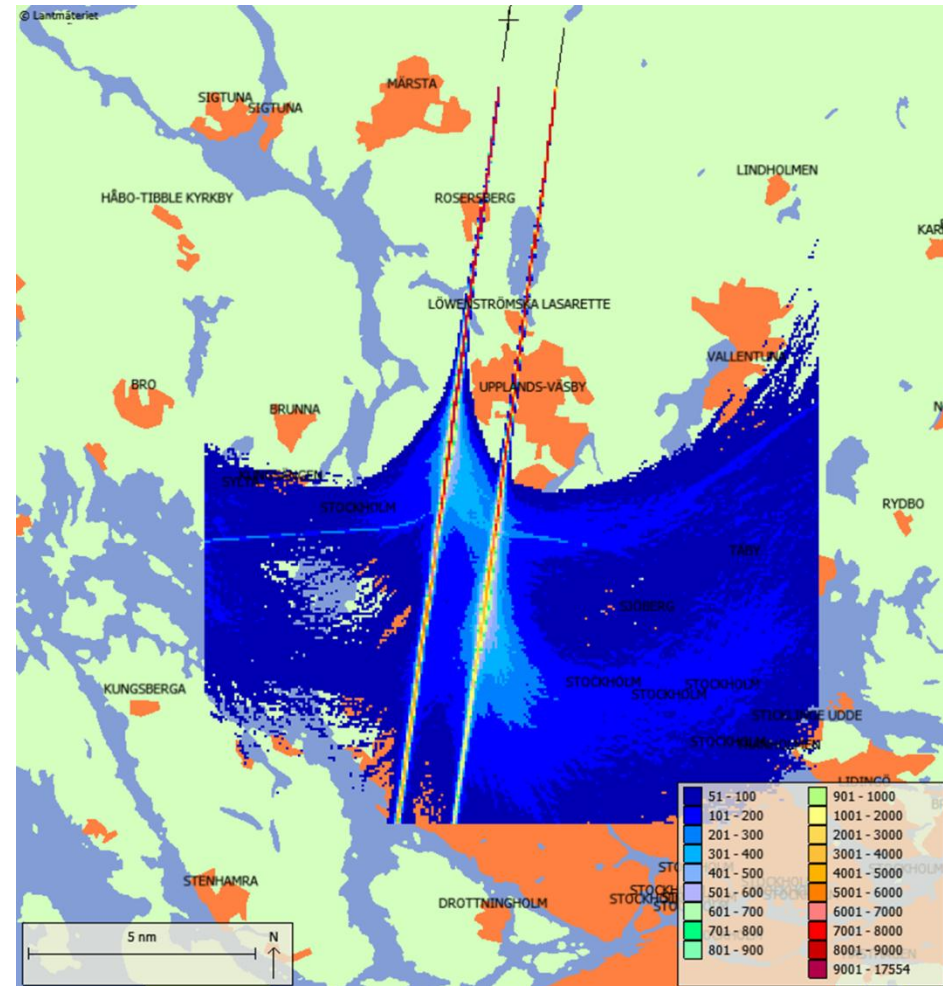
Täthetsbilder 01L & 01R

2001



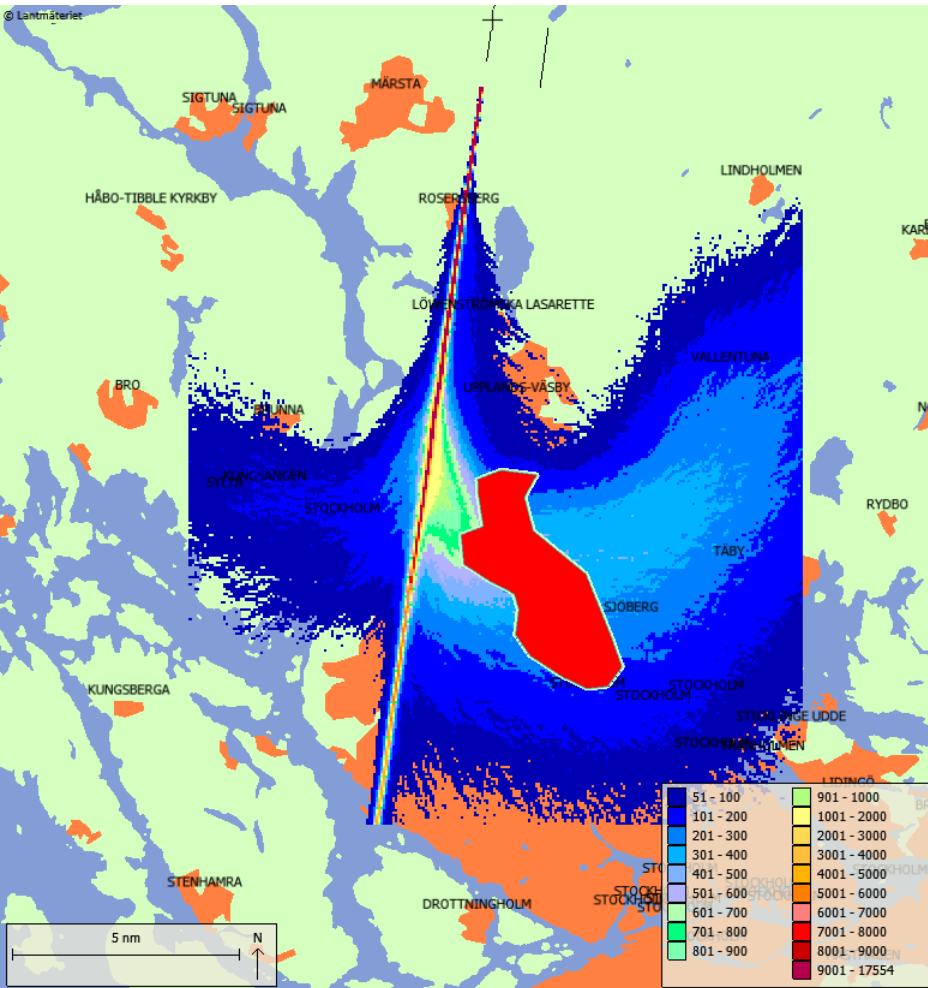
39 405 landningar

2011



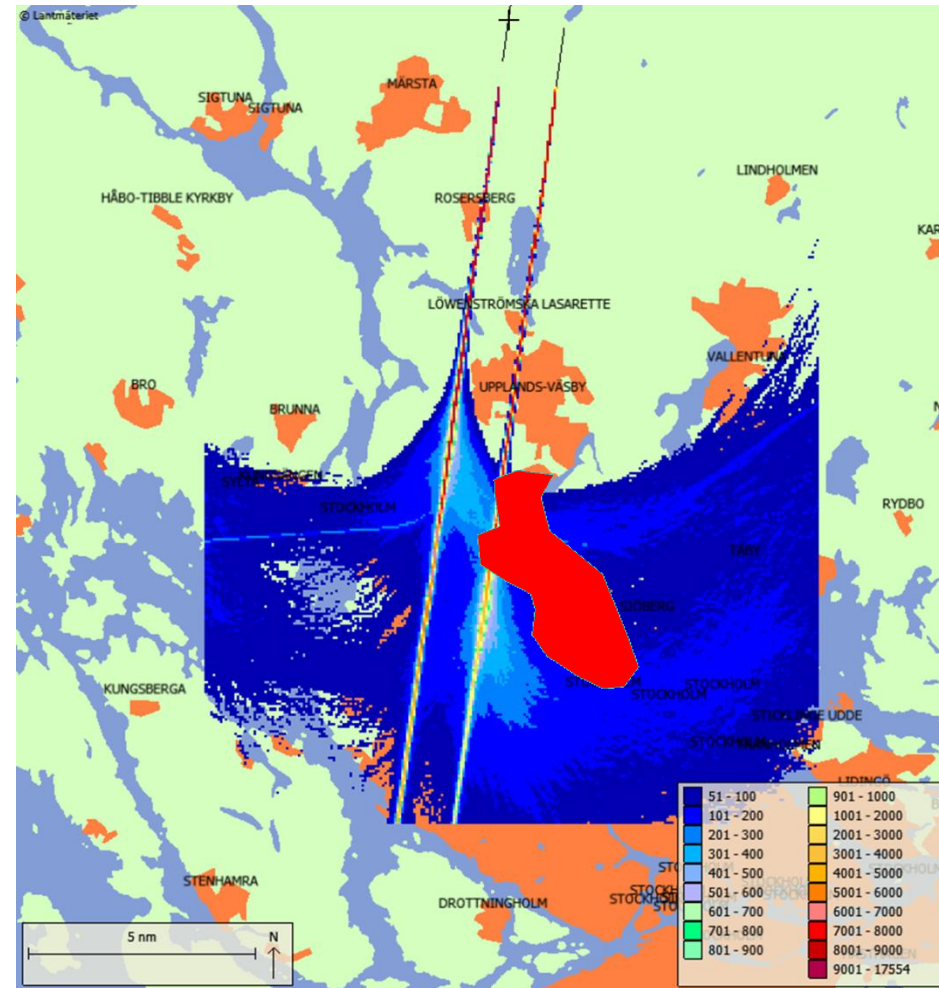
26 570 landningar

2001



39 405 landningar

2011

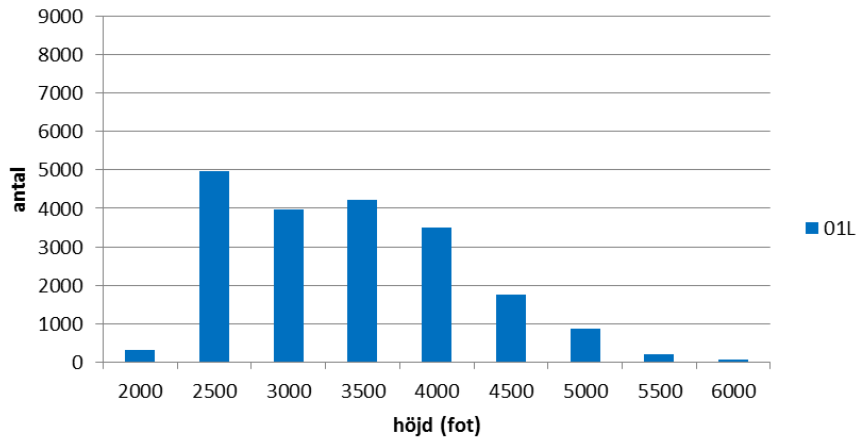


26 570 landningar

2001

2011

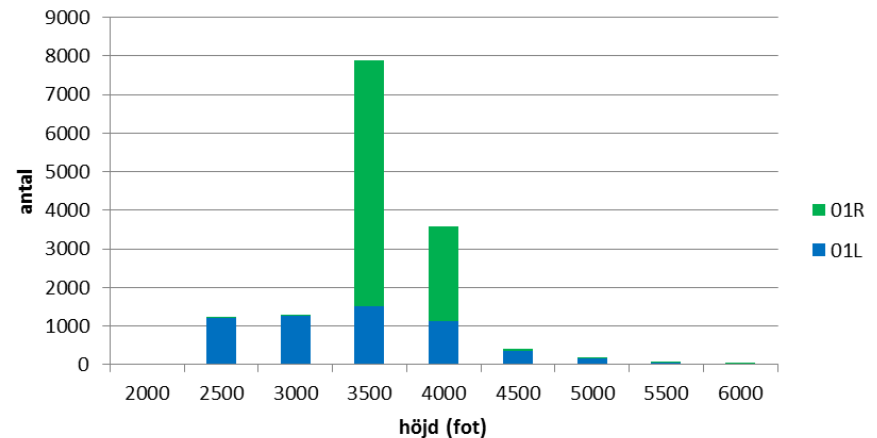
2001



19 907 landningar

Medelhöjd: 3400 fot

2011



14 601 landningar

Medelhöjd: 3600 fot

01L: 3400 fot

01R: 3700 fot